

# An Overview of the U.S. Food Regulatory System

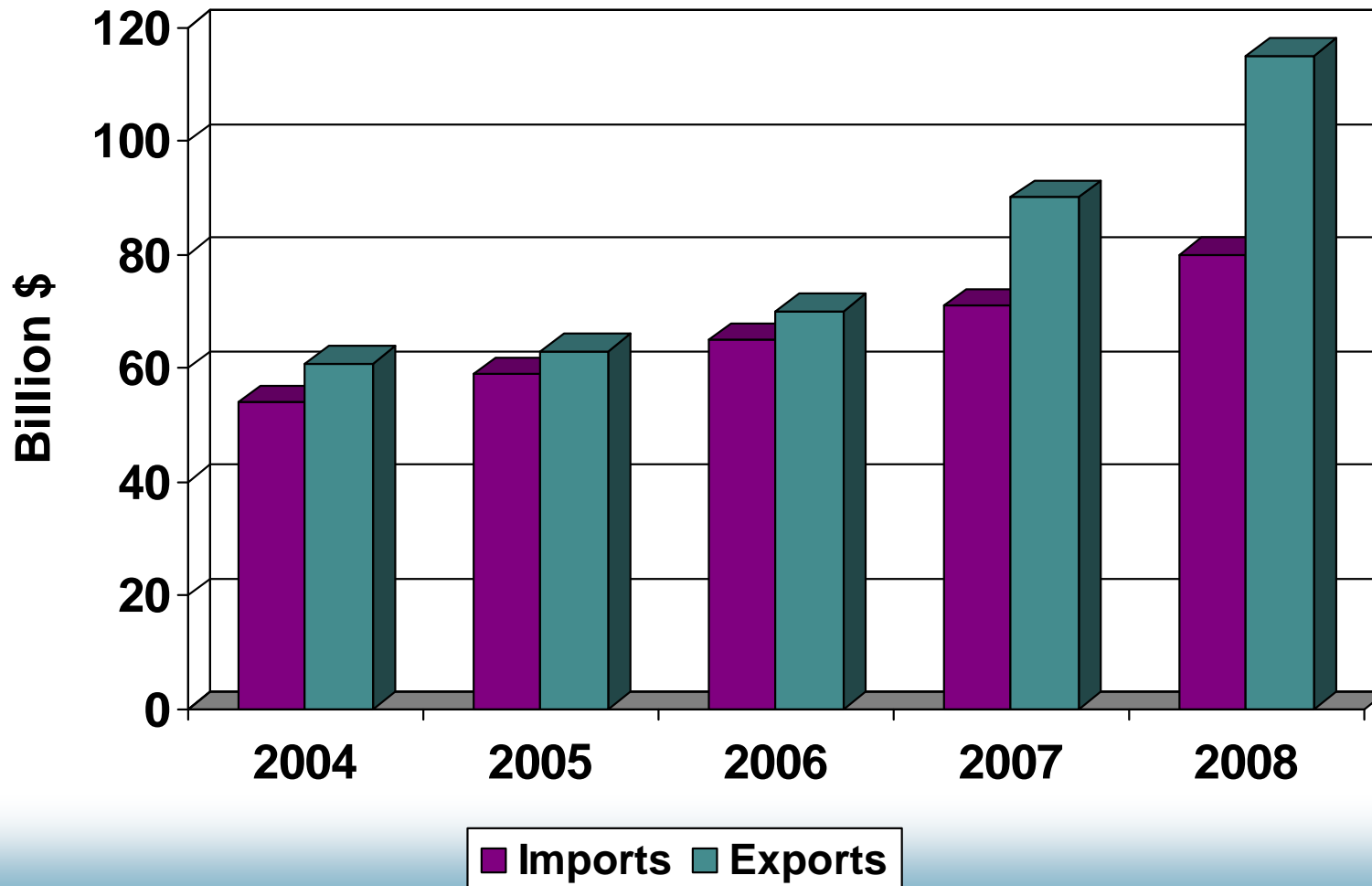
U.S.-Oman FTA Seminar

Prepared by

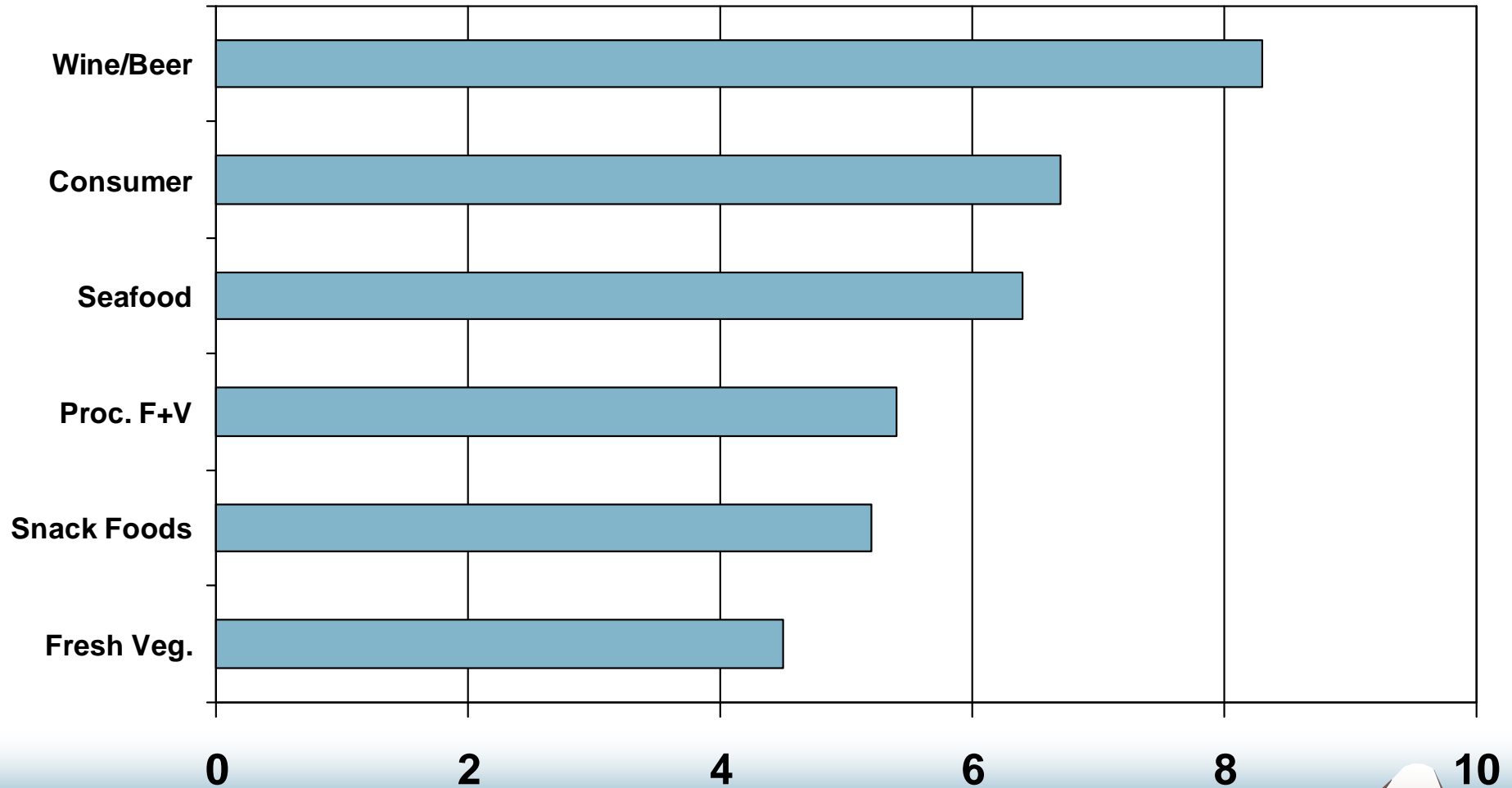
U.S. Agricultural Trade Office, Dubai

[atodubai@usda.gov](mailto:atodubai@usda.gov)

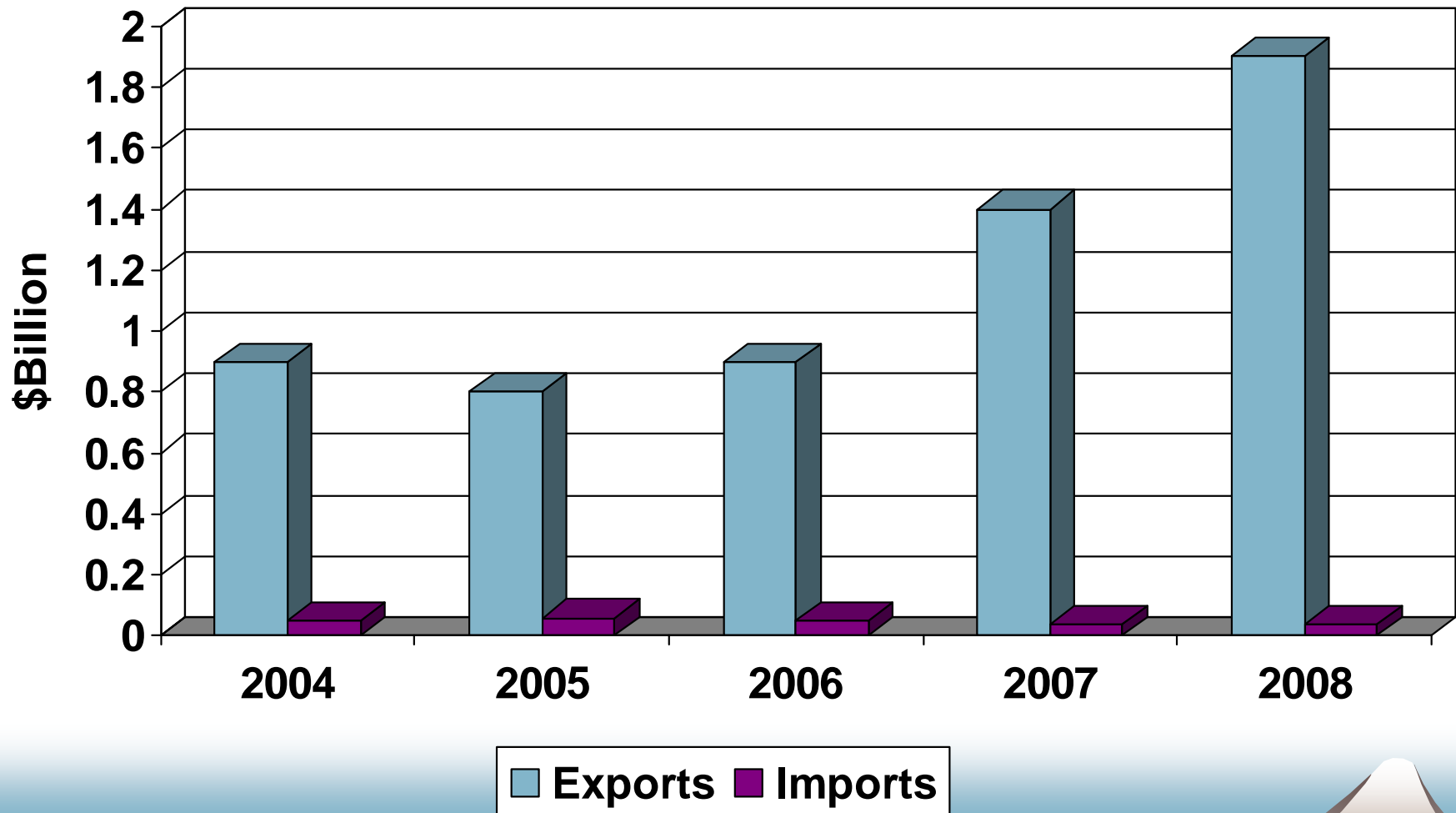
# The United States is a Major Exporter and Importer of Agricultural Products



# Top U.S. Agricultural Imports (2008, \$billion)



# U.S. Agriculture, Fish, Forestry Exports and Imports to/from the GCC



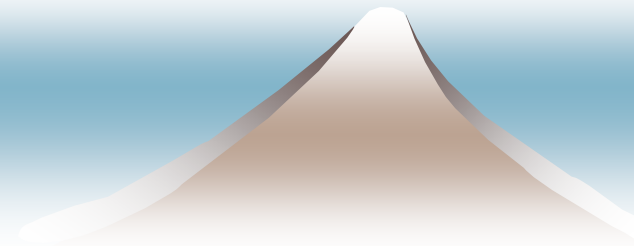
# U.S. Agriculture, Fish, Forestry Exports and Imports to/from Oman (\$Millions)



# Regulatory Overview

## U.S. Food And Drug Administration (FDA)

- ◆ Regulates about 80 percent of U.S. food supply, animal feed and pet food.
- ◆ Enforces food safety laws governing all imported foods except meat, poultry and egg products
- ◆ Develops regulations governing nutrition labeling and standards for foods, infant formula and dietary supplements.
- ◆ Approves food and animal feed additives
- ◆ <http://www.fda.gov>



# Bioterrorism Preparedness and Response Act of 2002

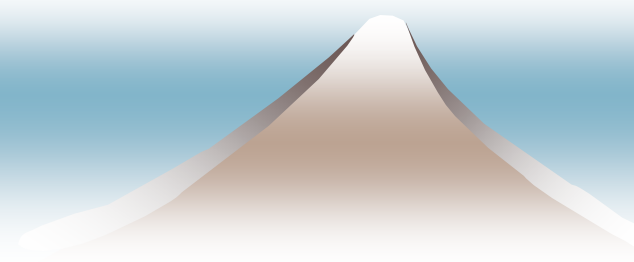
- ◆ Foreign food facilities handling products for sale in the United States must register with FDA.

<http://www.cfsan.fda.gov/~furls/ovffreg.html>

- ◆ Importers must provide prior notice of shipments

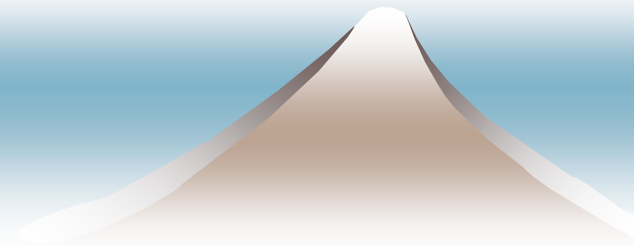
<http://www.cfsan.fda.gov/~pn/pnoview.html>

For more help 1-866-521-2297 or FURLS@fda.gov



# FDA Import Process

- ◆ FDA is notified of an entry by Customs and Border Protection with an entry notice, commercial invoice and performance bond.
- ◆ While most shipments clear on the basis of the documents, FDA may inspect the shipment depending on the nature of the product, FDA priorities or product history.
- ◆ FDA then follows an established procedure for sampling and detaining a shipment. For more information see <http://ww.cfsan.fda.gov/~lrd/imports.html>

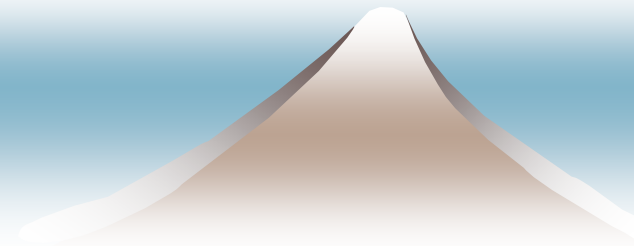


# Other FDA Related Issues

- ◆ Safety and Sanitation – Primarily the responsibility of the distributor.
- ◆ Good Manufacturing Practices
- ◆ Retail Labeling  
<http://www.cfsan.fda.gov/~dms/lab-ind.html>
- ◆ Nutritional Labeling  
<http://www.cfsan.fda.gov/~dms/nutrguid.html>
- ◆ Food Additives  
<http://wwwcfsan.fda.gov/~lrd/foodadd.html>
- ◆ HACCP for Juice and Seafood
- ◆ FDA Field Offices  
[http://www.fda.gov/ora/inspect\\_ref/iom/iomoradir.html](http://www.fda.gov/ora/inspect_ref/iom/iomoradir.html)

# Environmental Protection Agency

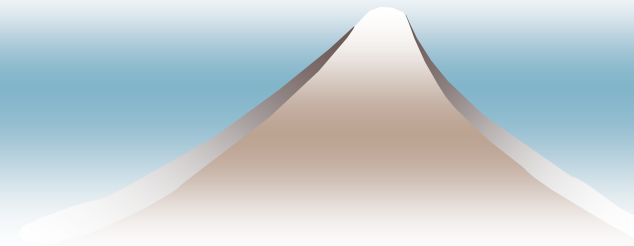
- ◆ Sets tolerances for pesticides allowed on specific agricultural products.
- ◆ FDA inspection may test for pesticide levels using the EPA tolerances.
- ◆ Products containing pesticides for which tolerances have not been established may be rejected.
- ◆ For a list of approved pesticides and tolerances <http://www.epa.gov/pesticides/food/viewtols.html>



# Food Safety and Inspection Service U.S. Department of Agriculture

- ◆ Enforces food safety laws governing imported and domestic raw and processed meat and poultry and processed egg products.
- ◆ Most mixed food products containing more than three percent meat by weight are regulated by FSIS

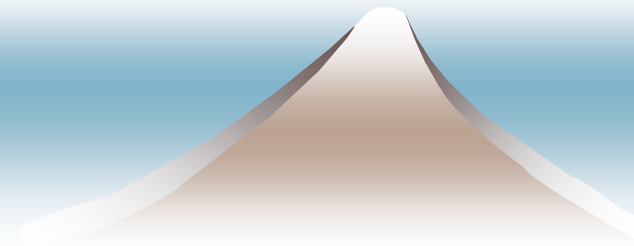
<http://www.fsis.usda.gov/>



# Animal and Plant Health Inspection Service U.S. Department of Agriculture

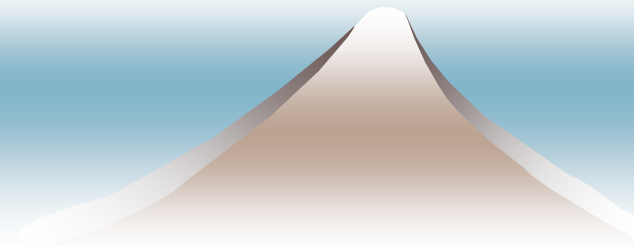
- ◆ Inspects live animals and live plants.
- ◆ Establishes pest and disease requirements for fruits, vegetables and live animals.
- ◆ May prohibit imports pending a risk analysis of certain pests and diseases.

<http://www.aphis.usda.gov>



# International Guidelines Are Becoming Increasingly Important

- ◆ Codex Alimentarius
- ◆ The World Animal Health Organization
- ◆ The International Plant Protection Convention



# Thank You

[atodubai@usda.gov](mailto:atodubai@usda.gov)

